



**CRESUD**

**Factsheet**

**FY 2022**

## THE COMPANY

CRESUD is an Argentine company, leader in the agribusiness for more than 80 years. We produce high quality goods, adding value to the Argentine agricultural production chain, with a growing presence in the region through investments in Brazil, Paraguay, and Bolivia. CRESUD is the only company of the sector whose shares are listed both on the Buenos Aires Stock Exchange (BYMA:CRES) and NASDAQ (NASDAQ:CRESY) with full transparency and responsibility.

### LEADING AGRICULTURAL COMPANY

Managing an approximately **800k ha** portfolio in Argentina, and in Brazil, Paraguay & Bolivia through our subsidiary Brasilagro.

### DIVERSIFIED PORTFOLIO

Exposure to farmland in Argentina, Brazil, Paraguay and Bolivia mitigates agribusiness risks.

### PIONEER IN FARMLAND REAL ESTATE

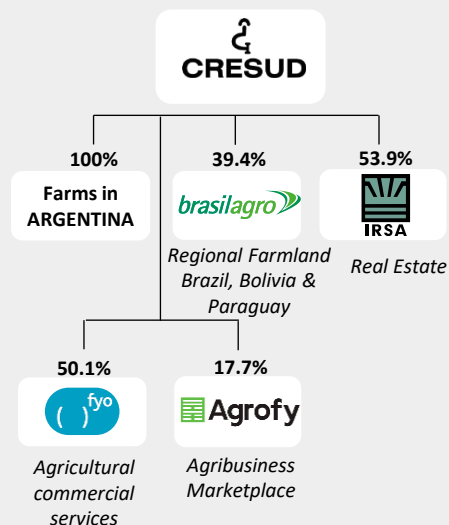
State of the art farmer with proven track record rotating the portfolio. Management of great experience and unique skills.

### CONTROLLER OF IRSA

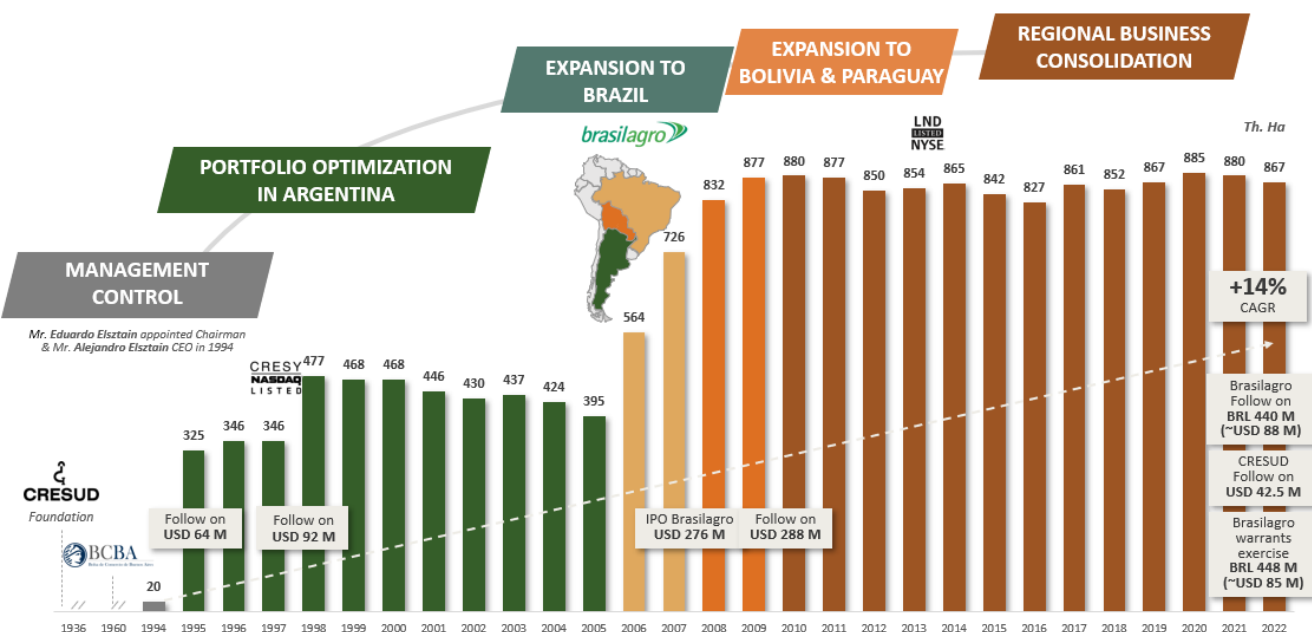
Largest diversified real estate company that manages a rental portfolio of more than 500k sqm of GLA in Argentina

### STRONG CAPITAL MARKETS' TRACK RECORD

Listed on BYMA since 1960 (CRES) and on NASDAQ since 1997 (CRESY). First Argentine agricultural company to be listed abroad Argentina.



## PORTFOLIO GROWTH

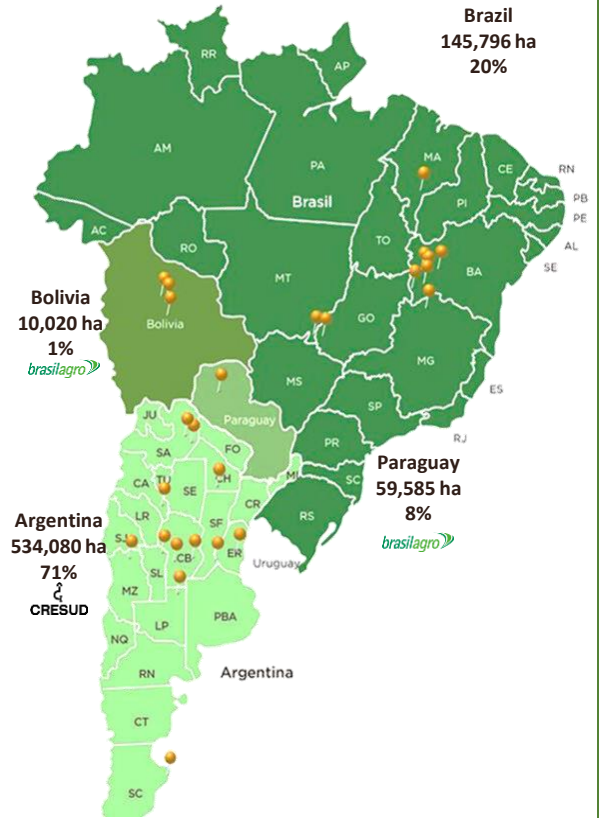
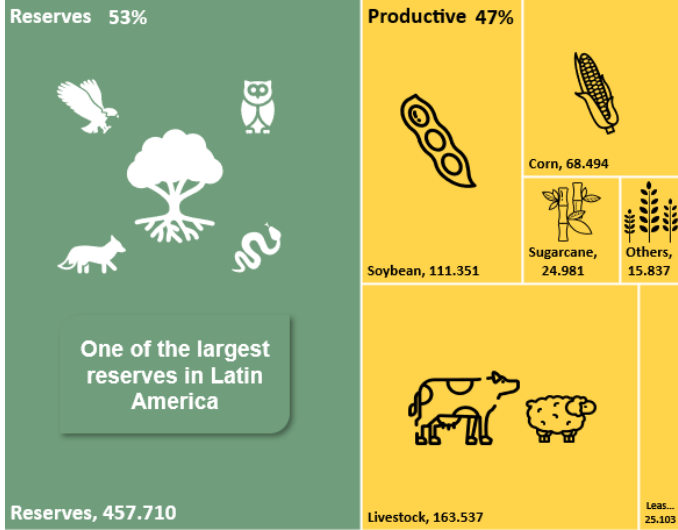




# REGIONAL AGRICULTURAL PORTFOLIO

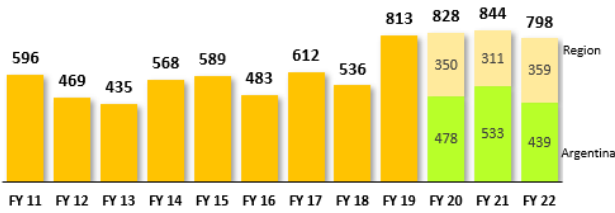
~867,000 hectares

Owned, LT concession & leased farms)

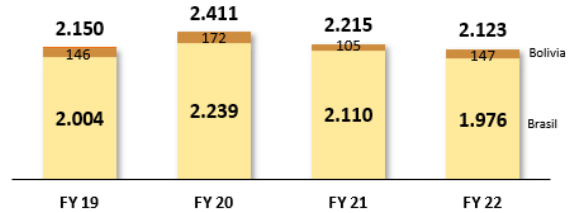


## FARMING ACTIVITY

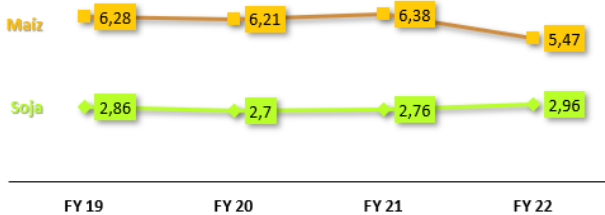
**CROP PRODUCTION**  
(Th. Tn)



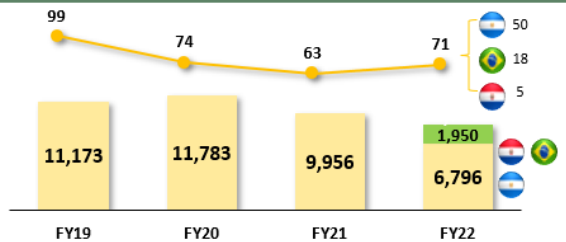
**SUGARCANE PRODUCTION**  
(Th. Tn)



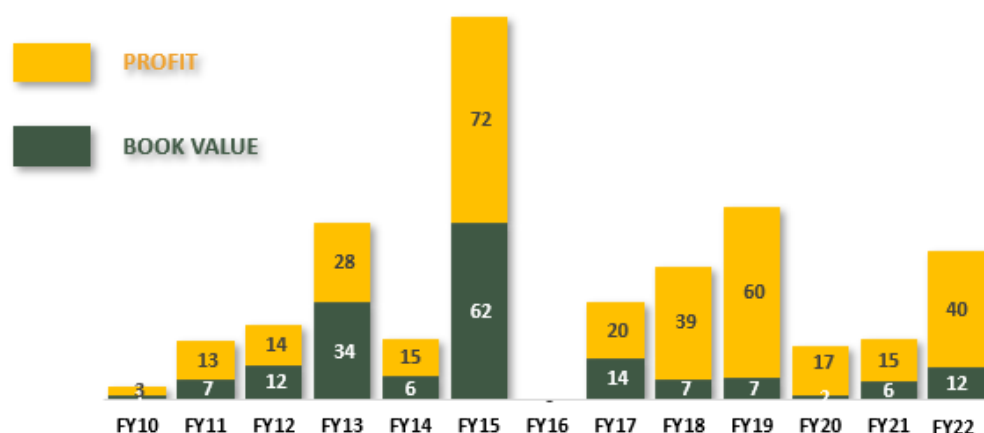
**CROP YIELDS**  
(Tn/ha – regional average)



**MEAT PRODUCTION & HEADS**  
(Th. Tn. & Th. units)



## FARMLAND SALES TRACK RECORD



Farms sold	1	2	3	4	2	4	-	6	3	3	4	2	2

25 YEARS  
TRACK RECORD

FARMS SOLD PER YEAR

**2.4x**

HA SOLD PER YEAR

**17,000**

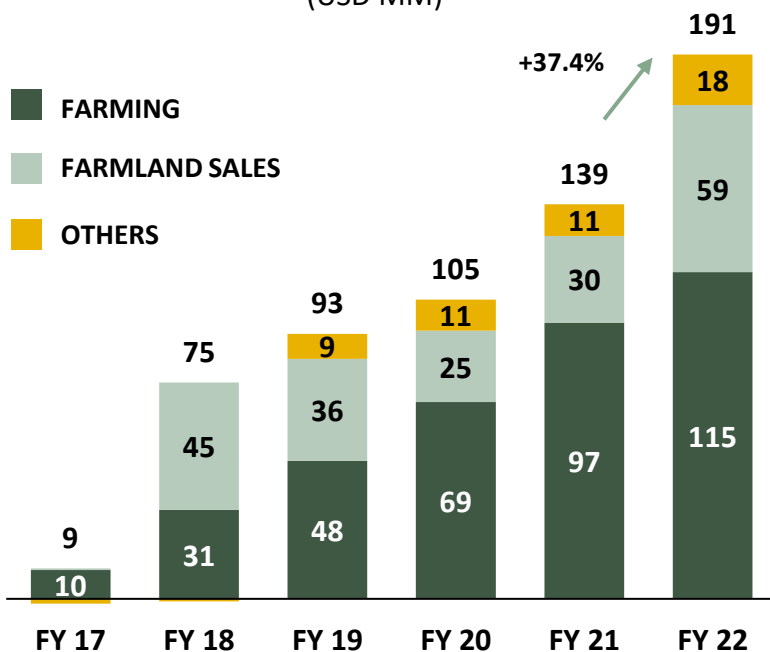
PORTFOLIO SOLD  
PER YEAR

**3.0%**

## ADJUSTED EBITDA EVOLUTION AND DEBT PROFILE

JUNE 30, 2021 - USD MILLION

### ADJ. EBITDA BY AGRIBUSINESS SEGMENT (USD MM)



DEBT Description	Amount	Maturity
Short term debt	81.1	<360 days
Series XXXII	34.3	Nov-22
Series XXXIII*	113.2	Feb-23
Series XXX	25.0	Aug-23
Series XXXI	0.8	Nov-23
Series XXXIV	24.0	Jun-24
Series XXXIII	18.8	Jul-24
Series XXXV	41.8	Sep-24
Series XXXVII	24.4	Mar-25
Series XXXVI	40.6	Feb-25
Other Debt	37.1	-
<b>GROSS DEBT</b>	<b>441.1</b>	
Cash & Equivalents	58.0	
<b>NET DEBT</b>	<b>383.1</b>	